

What is wastewater monitoring?

Wastewater monitoring helps communities detect when infectious diseases might be spreading.

Source: CDC

1

Max and a few others in their community get sick with the flu.



2

Like everyone else, Max uses the toilet, takes a shower and does laundry.



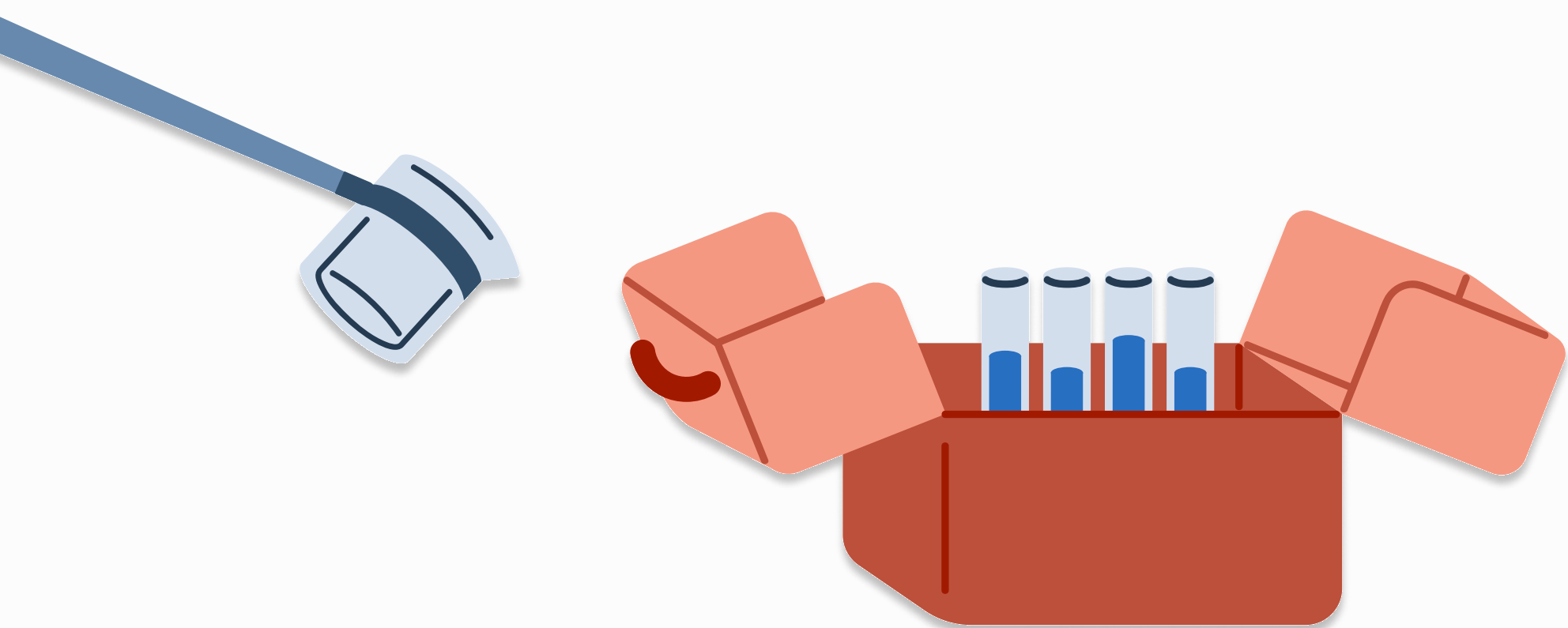
3

Pieces of the flu virus travel through the drains and pipes in Max's home, eventually reaching the sewer system.



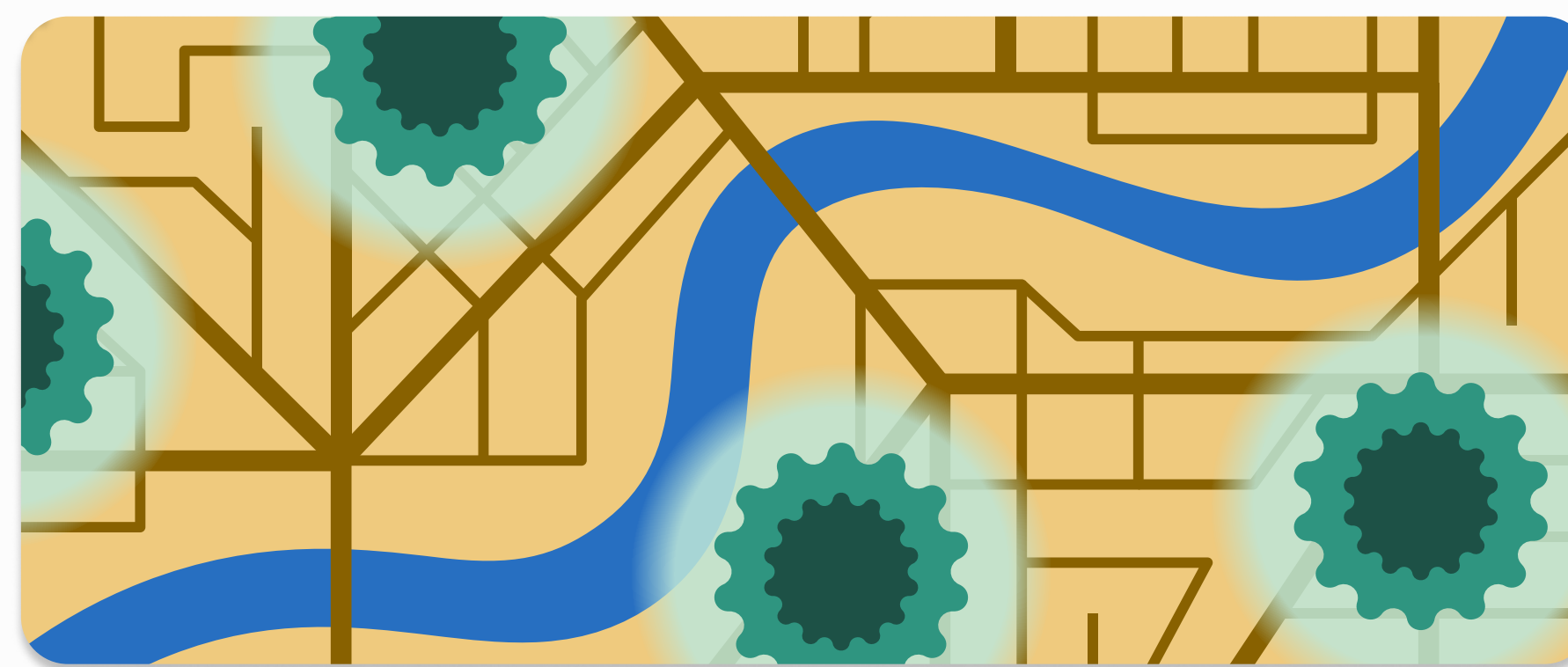
4

Before treating the wastewater, health officials collect samples for lab testing.



5

Scientists examine the wastewater samples for viruses and bacteria, then share what they find with public health officials.



6

Public health officials track how the flu and other illnesses spread in Ari's community and use data to share testing resources or safety tips.



4 out of 5

adults surveyed* support wastewater monitoring to find viruses or bacteria in a community.

